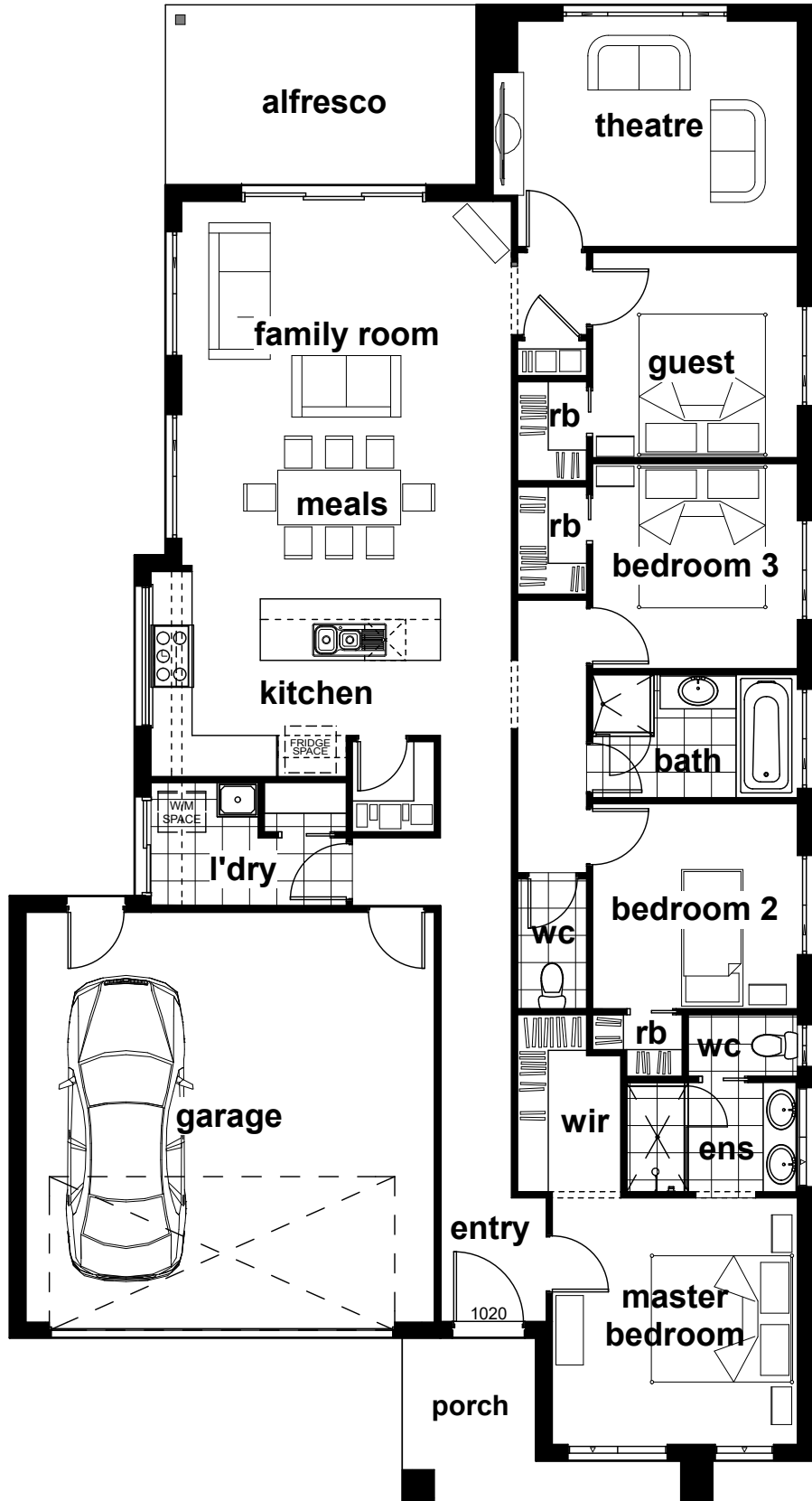


**Kitchen**  
 2600mm x 4240mm plus pantry  
**Meals/ Family**  
 5820mm x 4830mm  
**Bedroom 1**  
 3610mm x 3590mm  
**WIR**  
 2590mm x 1510mm  
**Ensuite**  
 1600mm x 2500mm  
**Bedroom 2**  
 3000mm x 3000mm plus robes  
**Bedroom 3**  
 3000mm x 3000mm plus robes  
**Bedroom 4/ Guest**  
 3000mm x 3000mm plus robes  
**Theatre**  
 3300mm x 4460mm  
**Bathroom**  
 1800mm x 3000mm  
**Laundry**  
 1810mm x 2860mm  
**Alfresco**  
 2640mm x 4560mm  
**Garage**  
 6000mm x 5980mm

**Overall length 21.92m**  
**Overall width 11.78m**

**AREA:**  
 Ground Floor: 157.75m<sup>2</sup>  
 Garage: 40.18m<sup>2</sup>  
 Alfresco: 12.04m<sup>2</sup>  
 Porch: 6.26m<sup>2</sup>



# Yarra 238