

Kitchen

4550mm x 2850mm plus pantry

Meals

4600mm x 3700mm

Family

6940mm x 5380mm

Bedroom 1

4100mm x 4990mm

WIR

3620mm x 1800mm

Ensuite

1800mm x 3100mm

Laundry

2400mm x 2700

Bedroom 2

3200mm x 3200mm plus robes

Bedroom 3

3700mm x 3300mm plus robes

Bedroom 4

3100mm x 3300mm plus robes

Rumpus

5400mm x 4200mm

Bathroom

1900mm x 3200mm

Alfresco

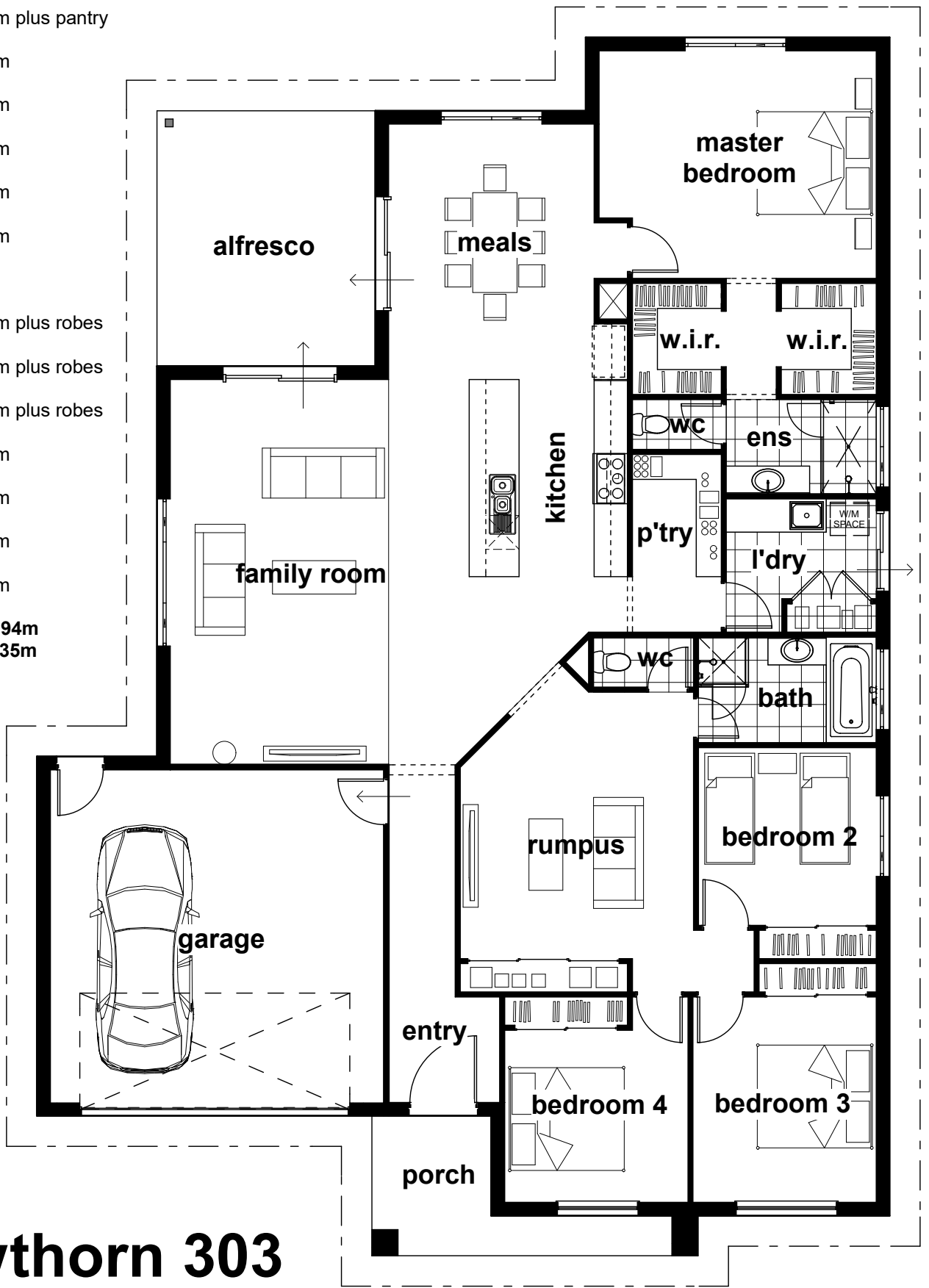
4600mm x 3930mm

Garage

6000mm x 6000mm

Overall length 21.94m

Overall width 15.35m



Hawthorn 303

AREA:

Ground Floor: 214.41m²

Garage: 40.35m²

Alfresco: 18.08m²

Porch: 8.10m²