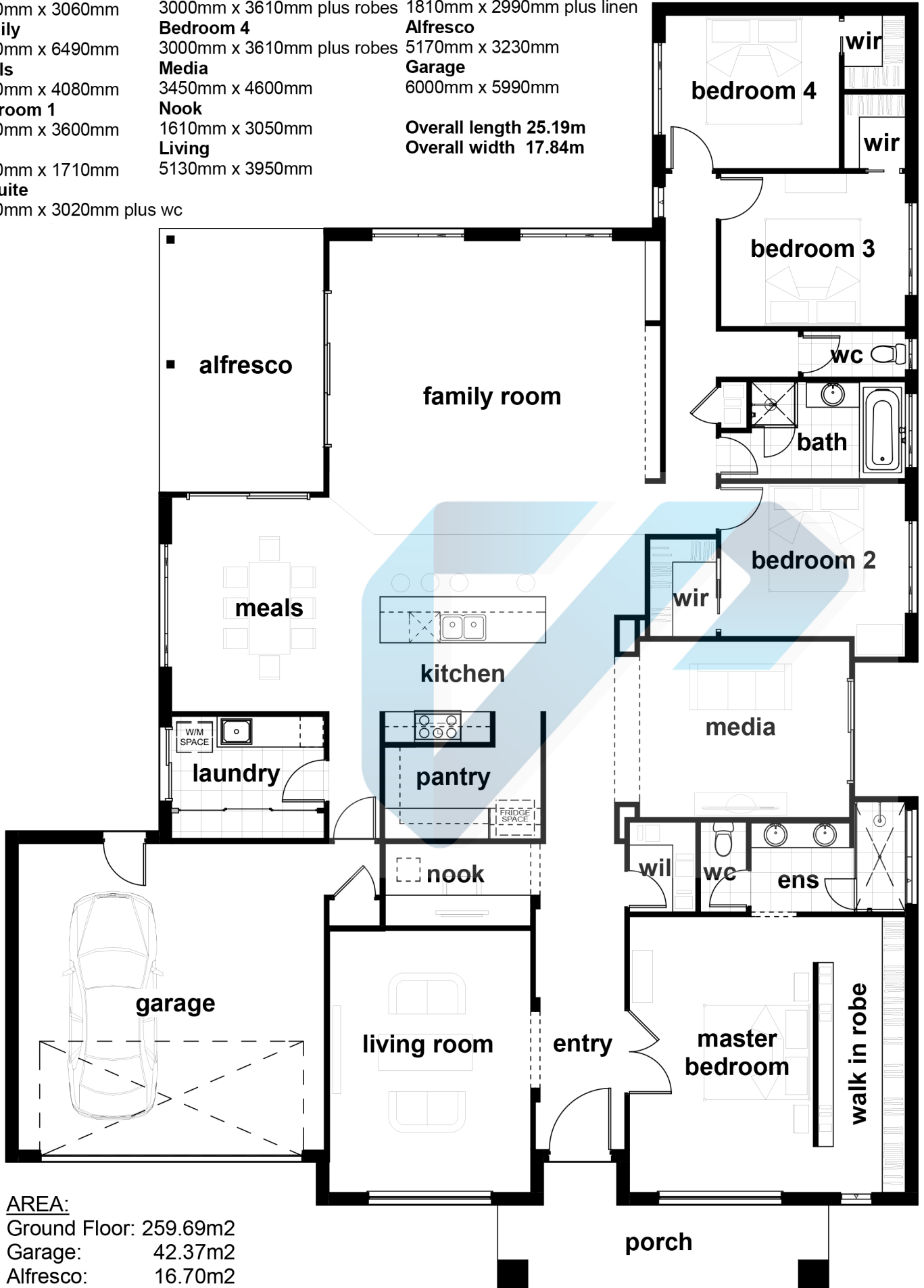


Kitchen
2600mm x 4240mm
Pantry
1800mm x 3060mm
Family
6970mm x 6490mm
Meals
4200mm x 4080mm
Bedroom 1
5400mm x 3600mm
WIR
5400mm x 1710mm
Ensuite
1760mm x 3020mm plus wc

Bedroom 2
3000mm x 3000mm plus robes
Bedroom 3
3000mm x 3610mm plus robes
Bedroom 4
3000mm x 3610mm plus robes
Media
3450mm x 4600mm
Nook
1610mm x 3050mm
Living
5130mm x 3950mm

Bathroom
1900mm x 3610mm
Laundry
1810mm x 2990mm plus linen
Alfresco
5170mm x 3230mm
Garage
6000mm x 5990mm

Overall length 25.19m
Overall width 17.84m



AREA:
Ground Floor: 259.69m²
Garage: 42.37m²
Alfresco: 16.70m²
Porch: 12.04m²

Elwood 356