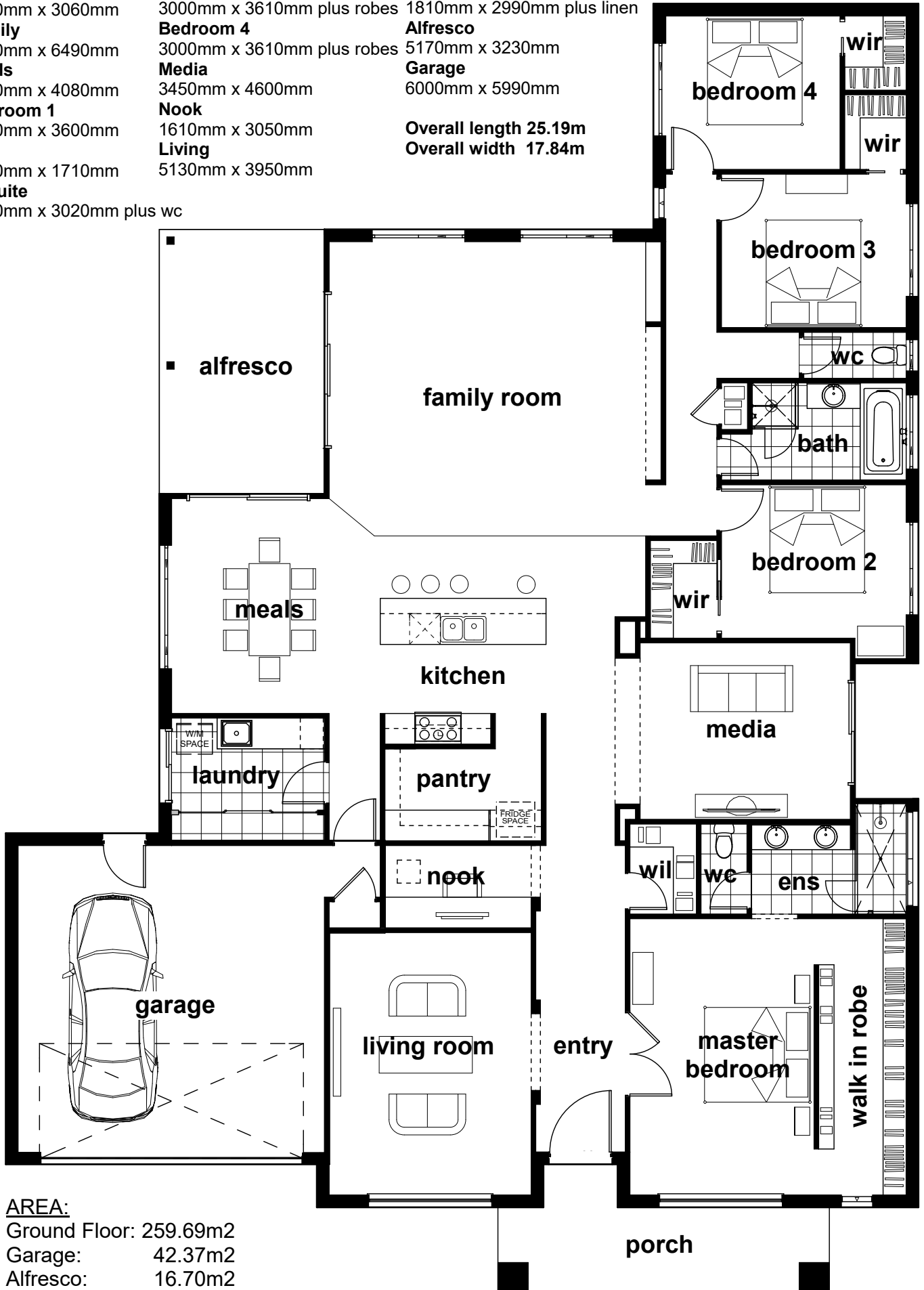


Kitchen
 2600mm x 4240mm
Pantry
 1800mm x 3060mm
Family
 6970mm x 6490mm
Meals
 4200mm x 4080mm
Bedroom 1
 5400mm x 3600mm
WIR
 5400mm x 1710mm
Ensuite
 1760mm x 3020mm plus wc

Bedroom 2
 3000mm x 3000mm plus robes
Bedroom 3
 3000mm x 3610mm plus robes
Bedroom 4
 3000mm x 3610mm plus robes
Media
 3450mm x 4600mm
Nook
 1610mm x 3050mm
Living
 5130mm x 3950mm

Bathroom
 1900mm x 3610mm
Laundry
 1810mm x 2990mm plus linen
Alfresco
 5170mm x 3230mm
Garage
 6000mm x 5990mm

Overall length 25.19m
Overall width 17.84m



AREA:
 Ground Floor: 259.69m²
 Garage: 42.37m²
 Alfresco: 16.70m²
 Porch: 12.04m²

Elwood 356